



EDGETEC®

FRAMELESS GLASS BALUSTRADE AND
POOL FENCING SYSTEMS

www.juralcobalustrades.co.nz

 **JURALCO**
EDGETEC

BALUSTRADE SYSTEMS

EDGETEC® MINI POST

PRODUCT FEATURES AND BENEFITS

- Enjoy Clear Views
- 12mm Toughened Glass
- Designed and Assembled in New Zealand
- Available in Wide Range of Dulux® Powder Coat Colours
- Complies with NZS1170, NZS4223.3.2016 & FOSP Act 1987
- Suitable for Occupancy Types A, A Other & C3 Residential
- Matching Interlinking Top Rail (not required for pool fencing)
- Matching Hydraulic Pool Gate & Panel Clip Hardware
- 5 Year Warranty*
- NZ Patent 618520



ALUMINIUM STANCHIONS WITH COLOUR CHOICE

Edgetec Mini Posts combine modern architectural grade aluminium clamps, stainless steel fixings and heavyweight toughened safety glass with a 38mm x 30mm interlinking top rail, for the best in frameless glass balustrades. Mini Posts are ideal for deck or stair balustrades and pool fencing as they are designed to offer maximum glass exposure for clearer views.

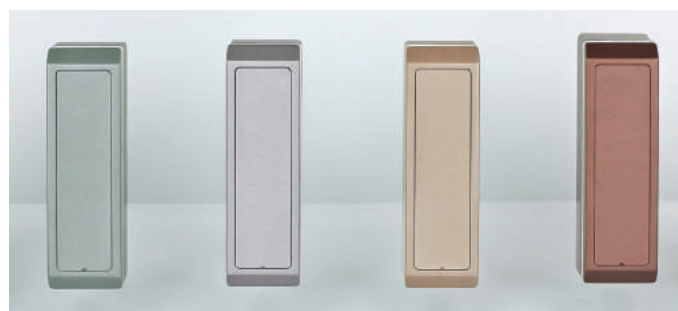
The Edgetec Mini Post has a patented adjustable clamping system, designed for 12mm thick toughened glass without holes. The system is designed for heights from 1000mm for balustrades to 1200mm for pool fencing. Available as top fix or face fix, Mini Posts have crafted covers which hide the engineered stainless steel fixings.

Modern house designs which include waterproof and floating decks, are accommodated with a specially designed gutter bracket for Mini Post balustrades. Custom coloured with a choice of over 40 standard Dulux powder coat finishes, Edgetec Mini Post Frameless Glass balustrades truly blend into the background.

EDGETEC® JH CLAMP

PRODUCT FEATURES AND BENEFITS

- Enjoy Clear Views
- 12mm/15mm Toughened Glass
- Designed and Assembled in New Zealand
- Available in Wide Range of Dulux® Powder Coat Colours
- Complies with NZS1170, NZS4223.3.2016 & FOSP Act 1987
- Suitable for Occupancy Types A, A Other, B, E, C3 Residential & C3 Commercial
- Matching Interlinking Top Rail (not required for pool fencing)
- Matching Hydraulic Pool Gate & Panel Clip Hardware
- 5 Year Warranty*



MINIMALIST FUNCTIONALISM

Designed in response to demands for maximum visibility, the JH Clamp Frameless Glass Balustrade presents minimal fixings in clearer views beyond the glass panels.

JH Clamp is an architectural grade aluminium clamp that fixes 12mm/15mm thick toughened glass panels to the external edge of balconies and stairs - as well as for internal stairs and landings. A 38mm x 30mm interlinking top rail is fitted to the top of the glass panels in a powder coat colour that matches the JH Clamps, to complete the balustrade. JH Clamp has a 30mm thick body which sets the glass out from the deck, assisting with water drainage and cleaning, but fixing centres are up to 50% wider than our traditional Edgetec Double Disc Anchors - providing a comparatively less visual and far more linear fixing detail.

Custom coloured with a choice of over 40 standard Dulux powder coat finishes, the JH Clamp is minimally intrusive with all 'through the glass' fixings hidden behind matching cover plates. For the ultimate in hidden fixing, the JH Clamp has an optional wooden deck detail that can conceal the clamp completely - blurring the line between where your deck ends and the balustrade begins.

EDGETEC® DISC ANCHOR

PRODUCT FEATURES AND BENEFITS

- Enjoy Clear Views
- 12mm/15mm Toughened Glass
- Available in Polished or Satin Marine Grade 316 Stainless Steel
- Complies with NZS1170 & NZS4223.3.2016
- Suitable for Occupancy Types A, A Other, B, E, C3 Residential & C3 Commercial
- 5 Year Warranty*



INDUSTRIAL AESTHETIC IN STAINLESS STEEL

The Edgetec Double Disc Anchor is a 50mm Diameter traditional stainless steel anchor fixing offering from the Edgetec balustrade range - ideal for those seeking a more industrial Frameless Glass Balustrade aesthetic.

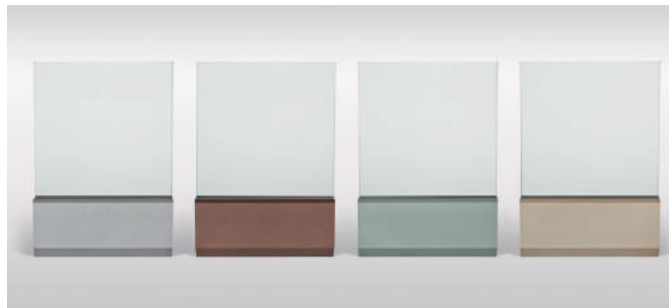
Double Disc Anchors are manufactured from solid 316 Marine Grade Stainless Steel. The 30mm long body sets the 12mm/15mm toughened glass panels out from the deck to assist with water draining and cleaning.

The Double Disc Anchor system is ideal for external balconies and stairs - as well as for internal stairs and landings. It can be fixed directly to either timber, steel or concrete surfaces and is finished with a 38mm x 30mm interlinking top rail in a choice of powder coat colours to suit.

The finish options are mirror polished stainless steel with a hidden fixing detail or satin stainless steel with a visible fixing detail.

PRODUCT FEATURES AND BENEFITS

- Enjoy Clear Views
- 12mm/15mm Toughened Glass
- Designed and Assembled in New Zealand
- Available in Wide Range of Dulux® Powder Coat Colours
- Complies with NZS1170, NZS4223.3.2016 & FOSP Act 1987
- Suitable for Occupancy Types A, A Other, B, E, C3 Residential & C3 Commercial
- Matching Hydraulic Pool Gate & Panel Clip Hardware
- 5 Year Warranty*
- NZ Patent 630364



CLEAN LINEAR DESIGN

Edgetec Infinity Frameless Glass Balustrade is a Cantilevered top or face fix system that offers a sleek linear design, for clear views.

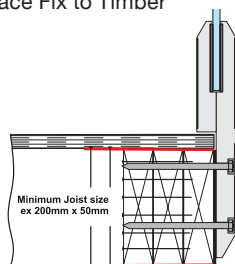
Manufactured from architectural grade aluminium, the proprietary Infinity clamps fix the 12mm/15mm toughened glass panels without a requirement for holes in the glass. Drawing from the patented technology of the Edgetec Mini Post – Infinity is adjustable, even if the deck moves after installation.

Custom coloured with a choice of over 40 standard Dulux powder coat finishes, Infinity balustrade clamps are set at regular centres, with alignment via a continuous back plate. A matching continuous linear front cover plate and a 38mm x 30mm interlinking top rail finishes off the system, producing a low profile modern look.

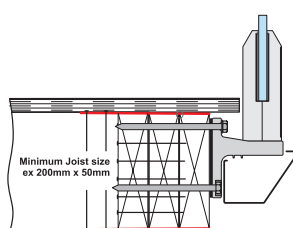
TYPICAL FIXING DETAILS

EDGETEC® MINI POST

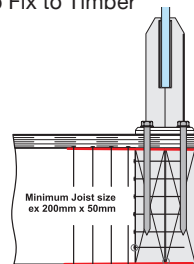
Face Fix to Timber



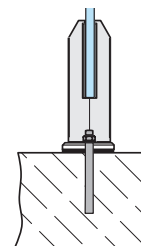
Face Fix to Timber with Gutter Bracket



Top Fix to Timber

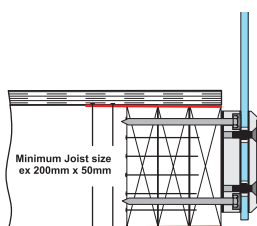


Top Fix to Concrete

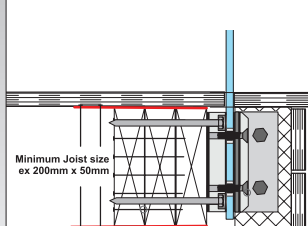


EDGETEC® JH CLAMP

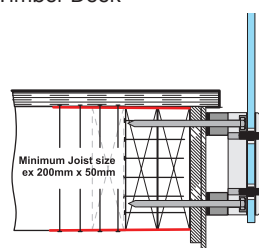
Face Fix to Timber



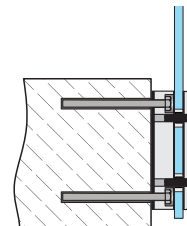
Hidden Face Fix to Timber



Face Face Fix to Waterproof Timber Deck

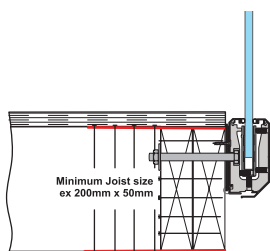


Face Face Fix to Concrete

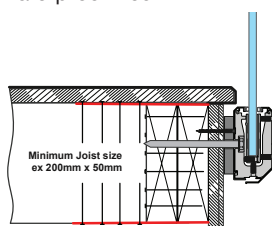


EDGETEC® INFINITY

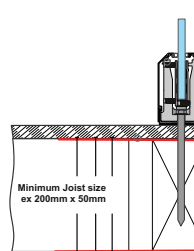
Face Fix to Timber



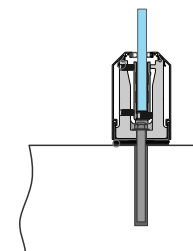
Face Fix to Timber Waterproof Deck



Top Fix to Timber

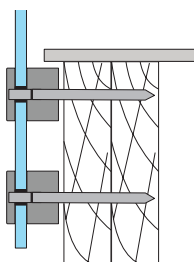


Top Fix to Concrete

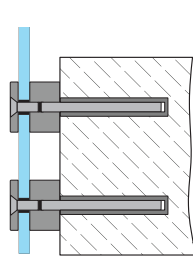


EDGETEC® DISC ANCHOR

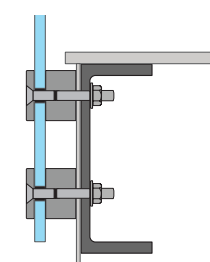
Domestic Timber Fix



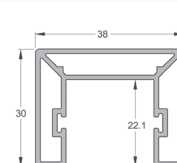
Concrete Fix



Steel Fix



INTERLINKING TOP RAIL



Required for all frameless toughened glass balustrades (not required for pool fencing)

The above represents only a few of the fixing details available - see your authorised Juralco Balustrade Installer for more details.

To guarantee customer satisfaction and ensure a high standard of quality, Edgetec balustrade systems are only available from the most highly qualified tradesman who have been certified to install these balustrade systems. You can refer to the address here and be confident that you will have a service that matches the Juralco balustrade product quality. The products in this brochure are the subject of intellectual property protection.

All brands are either trademarks of Juralco Aluminium Building Products Ltd or used under licence. Dulux® is a registered trademark of Dulux Group (Australia) PTY LTD.

JURALCO
EDGETEC
BALUSTRADE SYSTEMS

*For warranty terms & conditions see www.juralcobalustrades.co.nz

Available from:

Authorised Installer